



## WATER COOLERS

The Acorn Aqua range of steel, plumbed-in water coolers are built to exceptionally high standards for ease of installation and use, and long life. The refrigeration units are powerful enough to cope with high demand, especially important when coolers are fitted with bottle fillers. All models are available from stock for delivery in 3 to 5 working days. If you require more than 1 water cooler, please call 0845 202 4535 to receive an automatic **£40 discount** on each additional unit providing that they are to be delivered to the same UK mainland address.

The water coolers are supplied with all the necessary connectors. The electric power input is a 'kettle' socket and an appropriate lead for a UK wall socket is provided. There is also a water hose with the necessary connectors for a 15mm water supply pipe. It is advisable to fit a stop valve (not included) near to the cooler to isolate the water supply when needed. The waste drain is designed for a standard 1.25" (32mm) basin trap but please note that such a trap is not supplied.

**PRICES FROM MAY 2011** (subject to change without notice, please check our website)  
 Prices below exclude a £10 delivery charge per consignment (within mainland UK, excluding Highlands) and all prices do not include VAT.

<u>Model</u>	<u>Price</u>	<u>Model Reference</u>
Compact Floor Standing Water Cooler - Granite Apron Finish	£435	A511105
Wall Mounted Water Cooler – Granite Apron Finish	£499	A311108G
Wall Mounted Water Cooler – Stainless Steel	£530	A311408S
Wall Mounted Water Cooler – DDA/ADA compliant – Granite Apron	£525	A111108G
Wall Mounted Water Cooler – DDA/ADA compliant – Stainless Steel	£565	A111408S
Floor Standing Water Cooler – Granite Apron Finish	£535	A611108
Floor Standing Water Cooler – Stainless Steel	£555	A611408

**Note:** There is an option to include a swan-neck bottle/cup filler, in addition to the bubbler, for an additional cost to the prices above of £40





## **Acorn Aqua Compact Floor Standing Water Cooler** **Granite Finish (A511105)**

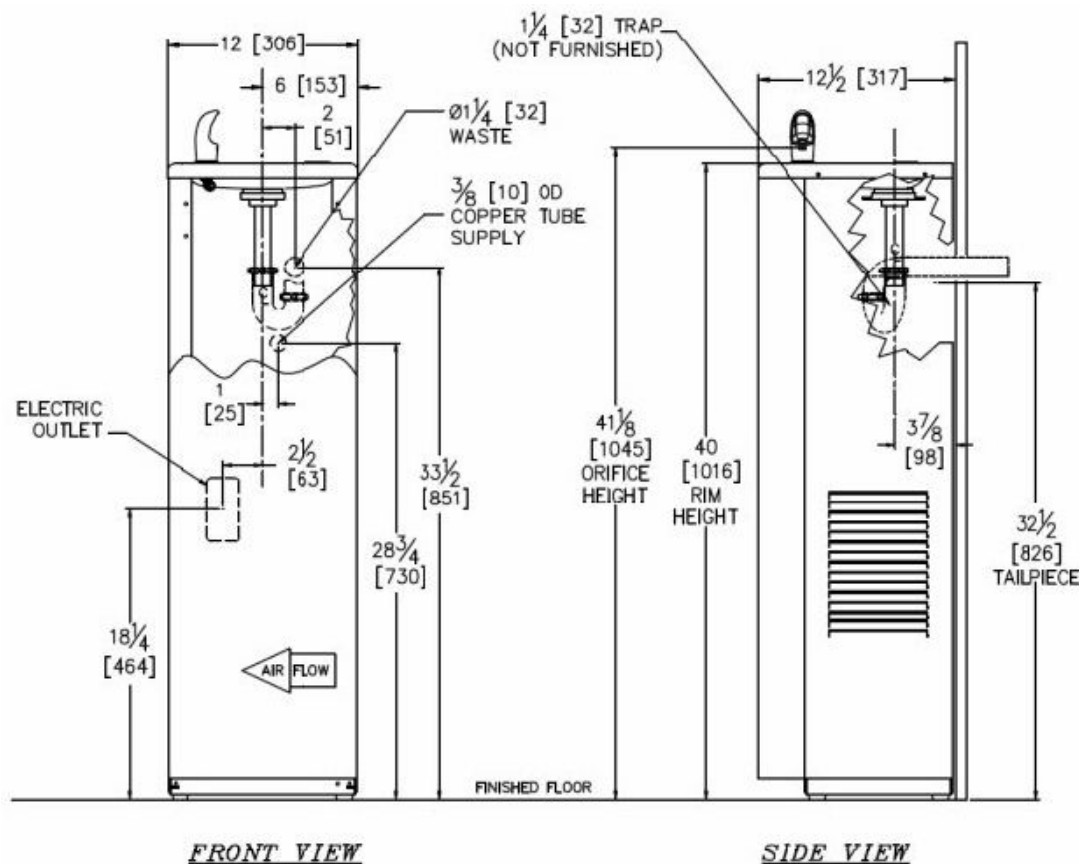
- delivers a minimum of 18.9 litres per hour of water, cooled to 10°C if input less than 26.7°C and room temperature less than 32.2°C
- flow is activated by self-closing push button which activates an internally mounted valve with adjustable flow regulator
- anti-rotation bubbler has a flexible guard with integral non-squirt feature
- 100 mesh inlet strainer
- top is constructed from grade 304 stainless steel, with an integral drain
- cabinet is granite powder coated on galvanized steel
- secured by vandal resistant screws
- evaporator is insulated, copper tube on stainless steel tank
- cooling system uses R-134a refrigerant, capillary tube controlled
- adjustable thermostat with an off position

**Width:** 306mm

**Depth:** 317mm (projection from wall)

**Height:** 1016mm (excluding bubbler or glass filler)

**Dispenser:** bubbler valve only or with drinking glass/bottle filler



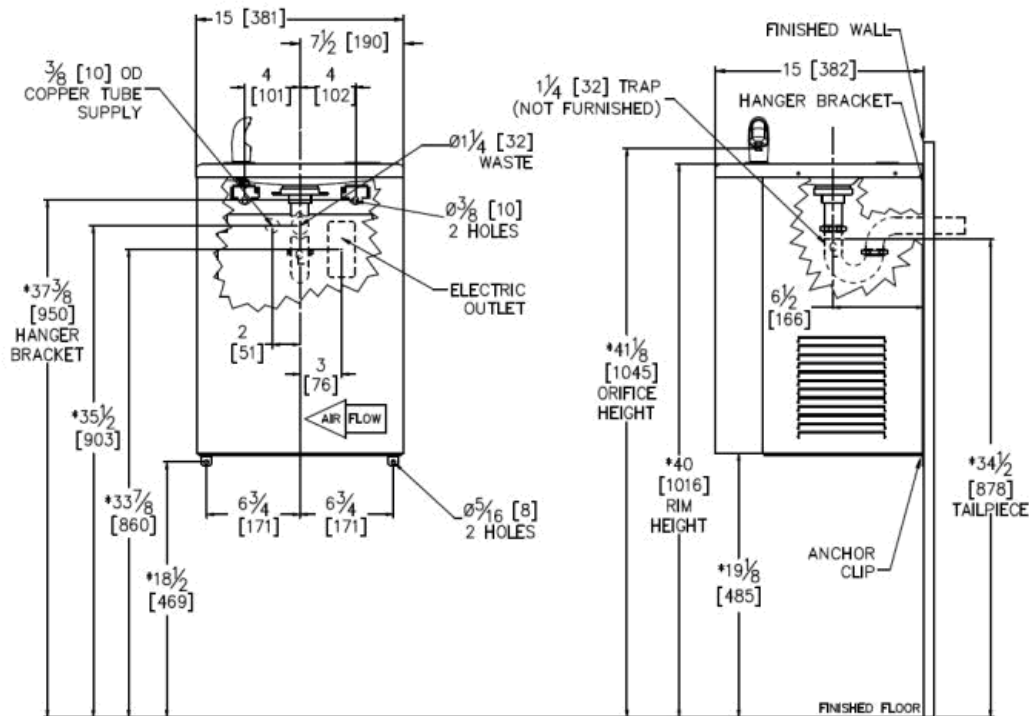
- GENERAL NOTES:**
1. ALL DIMENSIONS ARE IN INCHES [MM]
  2. ALLOW 4 INCHES [102 MM] MINIMUM CLEARANCE PER SIDE FOR VENTILATION
  3. STOP VALVE, TRAP, & ELECTRICAL OUTLET NOT SUPPLIED.



**Acorn Aqua Wall Hung Water Cooler**  
**Granite Finish (A311108G) or**  
**Stainless Steel Finish (A311408S)**

- delivers a minimum of 30.3 litres per hour of water, cooled to 10°C if input less than 26.7°C and room temperature less than 32.2°C
- flow is activated by self-closing push button which activates an internally mounted valve with adjustable flow regulator
- anti-rotation bubbler has a flexible guard with integral non-squirt feature
- 100 mesh inlet strainer
- top is constructed from grade 304 stainless steel, with an integral drain
- cabinet either granite powder coated on galvanized steel **or** polished stainless steel (additional cost option)
- vandal resistant screws
- evaporator is insulated, copper tube on stainless steel tank
- cooling system uses R-134a refrigerant, capillary tube controlled

**Width:** 381mm **Depth:** 382mm (projection from wall) **Height:** 531mm (excluding bubbler or glass filler)  
**Dispenser:** bubbler valve only or with drinking glass/bottle filler



- GENERAL NOTES:**
1. ALL DIMENSIONS ARE IN INCHES [MM]
  2. ALLOW 4 INCHES [102 MM] MINIMUM CLEARANCE PER SIDE FOR VENTILATION
  3. DIMENSIONS SHOWN ARE FOR RECOMMENDED ADULT HEIGHT. ADJUST VERTICAL DIMENSIONS AS NECESSARY TO COMPLY WITH LOCAL CODES.
  4. STOP VALVE, TRAP, & ELECTRICAL OUTLET NOT SUPPLIED.
  5. IMPORTANT: COOLER MUST BE ATTACHED TO WALL WITH ANCHOR SCREWS.

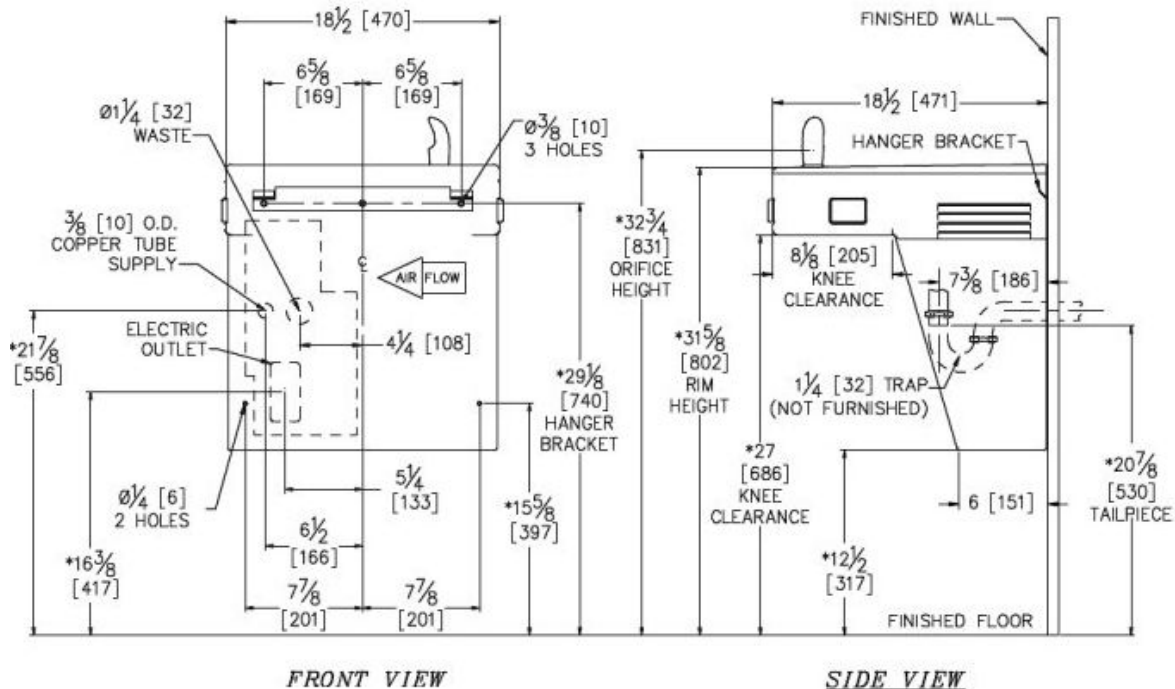


**Acorn Aqua Wall Hung DDA/ADA Compliant Water Cooler**  
**Granite Finish (A111108G) or Stainless Steel Finish (A111408S)**

- both child and adult DDA/ADA compliant for disabled use (when correctly installed)
- delivers a minimum of 30.3 litres per hour of water, cooled to 10°C if input less than 26.7°C and room temperature less than 32.2°C
- adjustable thermostat with an off position controls refrigeration system
- flow is activated from both side and front push bars using less than 5 pounds of force
- anti-rotation bubbler with integral non-squirt feature, either with flexible guard or in polished stainless steel (with stainless steel cabinet option)

- 100 mesh inlet strainer
- top is constructed from grade 304 stainless steel, with an integral drain
- cabinet either granite powder coated on galvanized steel or polished stainless steel (additional cost option)
- vandal resistant screws
- evaporator is insulated, copper tube on stainless steel tank
- cooling system uses R-134a refrigerant, capillary tube controlled

**Width:** 470mm **Depth:** 472mm (projection from wall) **Height:** 272mm (excluding bubbler or glass filler)  
**Dispenser:** bubbler valve only or with drinking glass/bottle filler



- GENERAL NOTES:**
1. ALL DIMENSIONS ARE IN INCHES [MM]
  2. ALLOW 4 INCHES [102 MM] MINIMUM CLEARANCE PER SIDE FOR VENTILATION
  - \*3. DIMENSIONS SHOWN ARE FOR RECOMMENDED ADULT HEIGHT. ADJUST VERTICAL DIMENSIONS AS NECESSARY TO COMPLY WITH LOCAL CODES.
  4. STOP VALVE, TRAP, & ELECTRICAL OUTLET NOT SUPPLIED.
  5. IMPORTANT: COOLER MUST BE ATTACHED TO WALL WITH ANCHOR SCREWS.



**Acorn Aqua Floor Standing Water Cooler**  
**Granite Finish (A61108) or**  
**Stainless Steel (A611408)**

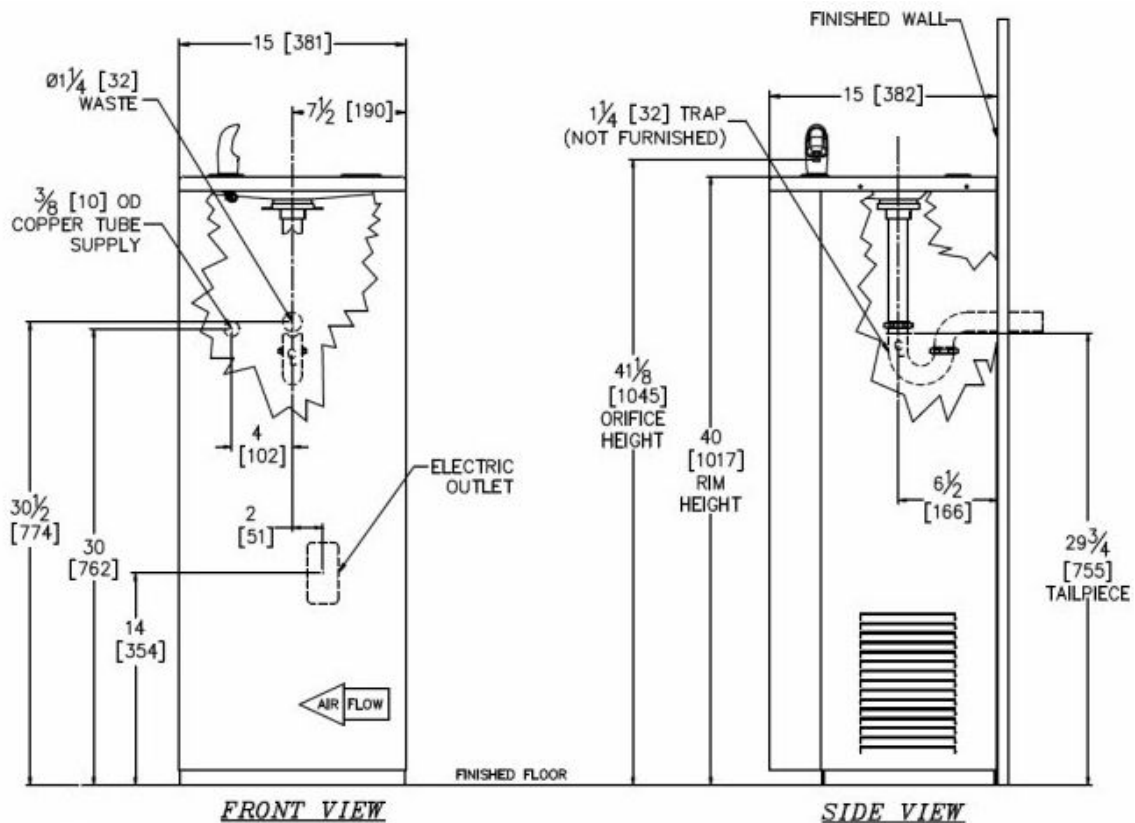
- delivers a minimum of 30.3 litres per hour of water, cooled to 10°C if input less than 26.7°C and room temperature less than 32.2°C
- flow is activated by self-closing push button which activates an internally mounted valve with adjustable flow regulator
- anti-rotation bubbler has a flexible guard with integral non-squirt feature
- 100 mesh inlet strainer
- top is constructed from grade 304 stainless steel, with an integral drain
- cabinet constructed in polished stainless steel
- vandal resistant screws
- evaporator is insulated, copper tube on stainless steel tank
- cooling system uses R-134a refrigerant, capillary tube controlled

**Width:** 381mm

**Depth:** 382mm (projection from wall)

**Height:** 1017mm (excluding bubbler or glass filler)

**Dispenser:** bubbler valve only or with drinking glass/bottle filler



- GENERAL NOTES:**
1. ALL DIMENSIONS ARE IN INCHES [MM]
  2. ALLOW 4 INCHES [102 MM] MINIMUM CLEARANCE PER SIDE FOR VENTILATION
  3. STOP VALVE, TRAP, & ELECTRICAL OUTLET NOT SUPPLIED.