



Gentworks Ltd.
 Tel: 0845 202 4535
 Fax: 0870 458 1884
 Web: www.gentworks.co.uk
 Email: info@gentworks.co.uk

DRINKING WATER FOUNTAINS

Gentworks supplies 5 high-quality drinking fountain models from Acorn Powell's Apinox range, each with a push-button bottle filler option available. We also offer a well-designed and practical economy model. All drinking fountains are stock items for same or next day shipment. Standard delivery time is 3 to 5 working days but a 'rush' delivery option is available whereby orders placed before noon are despatched on a special service for delivery on the morning of the next working day.

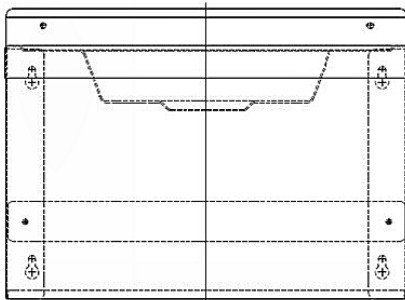
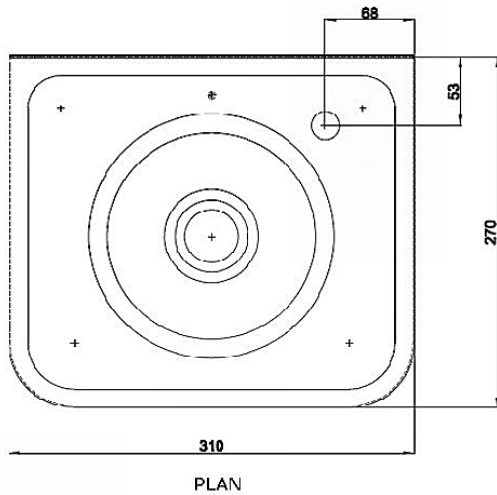
PRICES FROM 1st December 2011

(subject to change without notice, please check our website)

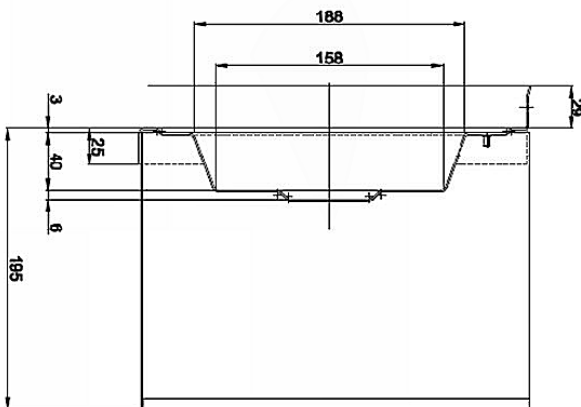
Prices below exclude a £10 delivery charge per consignment (within mainland UK, excluding Highlands). Rush delivery, if required, costs an additional £30. Please note that all prices exclude VAT.

<u>Model</u>	<u>Price</u>	<u>Model Reference</u>
Economy Wall Mounted Drinking Fountain - Bubbler	£149	AP-460
Apinox Wall Mounted Drinking Fountain - Bubbler	£179	AP-461-B
Apinox Wall Mounted Drinking Fountain - Bottle Filler	£184	AP-463-S
Apinox Wall Mounted Drinking Fountain with Undershroud - Bubbler	£260	AP-462-B
Apinox Wall Mounted Drinking Fountain with Undershroud - Bottle Filler	£265	AP-464-S
Apinox Floor Standing Drinking Fountain - Junior Height - Bubbler	£460	AP-472-B
Apinox Floor Standing Drinking Fountain - Junior Height - Bottle Filler	£465	AP-474-S
Apinox Floor Standing Drinking Fountain - Adult Height - Bubbler	£480	AP-471-B
Apinox Floor Standing Drinking Fountain - Adult Height - Bottle Filler	£485	AP-473-S
Apinox Pedestal Drinking Fountain - Bubbler	£540	AP-481-B
Apinox Pedestal Drinking Fountain - Bottle Filler	£545	AP-483-S

Economy Wall Mounted Drinking Fountain
(AP-460)



REAR ELEVATION



SECTION ON CENTRELINE



This wall mounted stainless steel drinking fountain has a compact top incorporating smooth radiused front corners and rear upturn. The top is pre-fitted with a stainless steel apron support that includes 'key hole slots' for easy wall mounting. The drinking fountain is supplied with a chrome-plated shielded bubbler with self closing push button valve, water inlet fitting to suit 15 mm diameter pipework and 32 mm (1¼ in) BSP unslotted flush grated waste fitting. The unit is constructed from Grade 304 stainless steel of 1.2mm thickness for the top and 0.9mm for the integrated fixing skirt.

Width: 310mm

Depth: 275mm (projection from wall)

Height: 230mm (including 30mm high rear upturn but excluding bubbler)

Wall Mounted Drinking Fountain
(AP-461-B and AP-463-S)

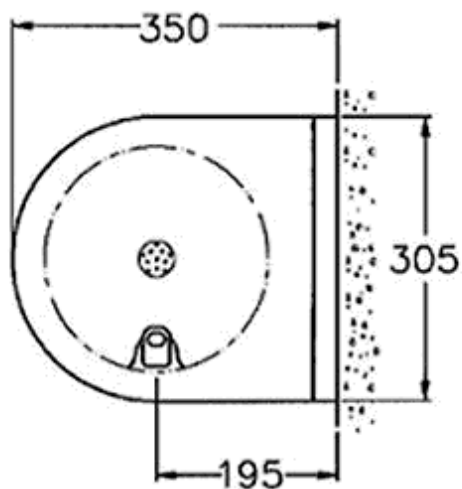


The wall mounted drinking fountain is hygienic, robust and easily installed at adult or junior height. The shielded bubbler valve is positioned for ease of use and the smooth radiused design eliminates sharp corners which can cause injury. This model comes with integral wall mounting brackets and is manufactured in one piece without joints or crevices from grade 304 stainless steel. All exposed surfaces are polished to a satin finish. For ease of cleaning and hygiene, a splashback is incorporated in the top. Each drinking fountain is supplied with a 32mm flush grated waste fitting and a chrome-plated shielded bubbler complete with a self closing push button valve. The valve incorporates a flow adjuster and strainer and is supplied with a water inlet fitting to suit 15mm diameter pipework.

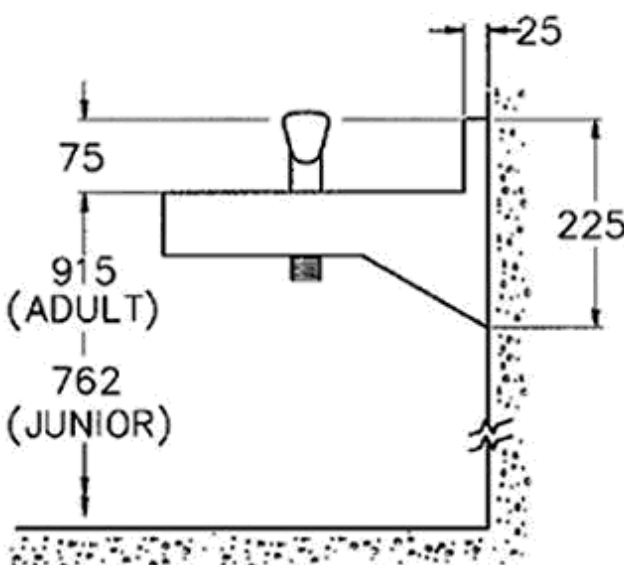


Width: 305mm
Depth: 350mm (projection from wall)
Height: 225mm (including 75mm high rear upturn but excluding bubbler)

Dispenser type: standard bubbler valve can be changed to self-closing push button valve fitted with a 255mm high, chrome plated, fixed brass swan-neck spout. Water only flows whilst the button is depressed.



Plan



End Elevation



Wall Mounted Drinking Fountain with Undershroud
(AP-462-B and AP-464-S)

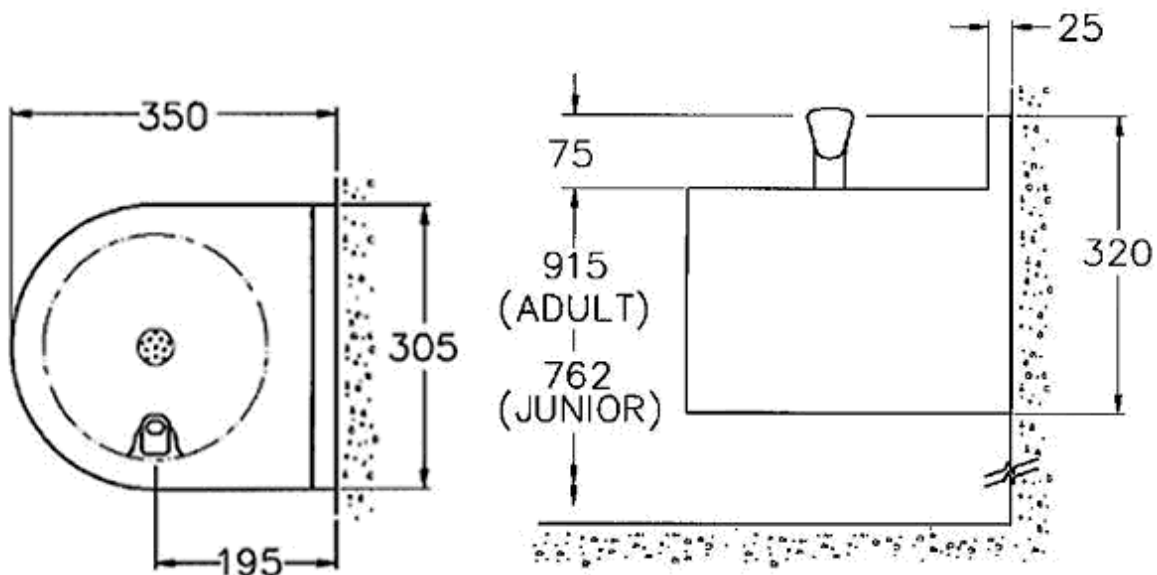
The wall mounted drinking fountain is hygienic, robust and easily installed at adult or junior height. The shielded bubbler valve is positioned for ease of use and the smooth radiused design eliminates sharp corners which can cause injury. This model comes with a half-height undershroud with removable access panel, held in position by security-type screws, to conceal the supply and waste pipework. It is manufactured in one piece, without joints or crevices, from grade 304 stainless steel, with all exposed surfaces polished to a satin finish. For ease of cleaning and hygiene, a splashback is incorporated in the top. Each drinking fountain is supplied with a 32mm flush grated waste fitting and a chrome-plated shielded bubbler complete with a self closing push button valve. The valve incorporates a flow adjuster and strainer and is supplied with a water inlet fitting to suit 15mm diameter pipework.



Width: 305mm
Depth: 350mm (projection from wall)
Height: 320mm (including 75mm high rear upturn and undershroud but excluding bubbler)

Dispenser type: standard bubbler valve can be changed to self-closing push button valve fitted with a 255mm high, chrome plated, fixed brass swan-neck spout. Water only flows whilst the

button is depressed.



Plan

End Elevation



Floor Standing Drinking Fountain – Junior Height
(AP-472-B and AP 474-S)



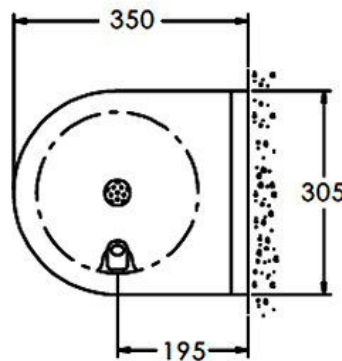
The junior height, floor standing drinking fountain is hygienic, robust and easily installed. The shielded bubbler valve is positioned for ease of use and the smooth radiused design eliminates sharp corners which can cause injury. This model comes with full height shroud which is held in position by security-type screws. The drinking fountain is manufactured in one piece without joints or crevices from grade 304 stainless steel. All exposed surfaces are polished to a satin finish. For ease of cleaning and hygiene, a splashback is incorporated in the top. Each drinking fountain is supplied with a 32mm flush grated waste fitting and a chrome-plated shielded bubbler complete with a self closing push button valve. The valve incorporates a flow adjuster and strainer and is supplied with a water inlet fitting to suit 15mm diameter pipework.

Width: 305mm

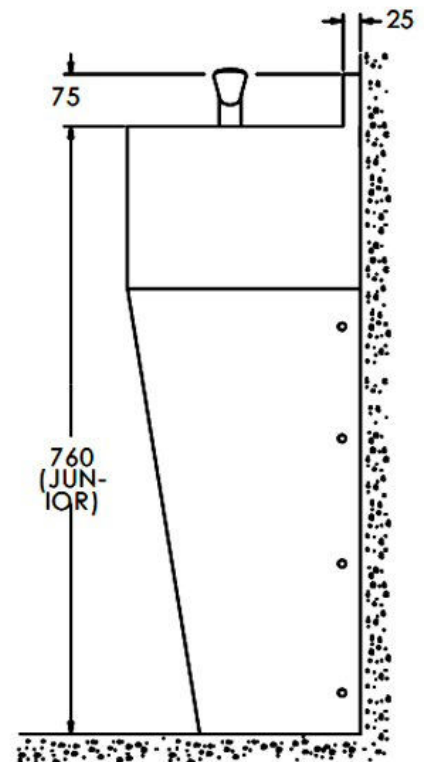
Depth: 350mm (projection from wall)

Height: 835mm (including 75mm high rear upturn but excluding bubbler)

Dispenser type: standard bubbler valve can be changed to self-closing push button valve fitted with a 255mm high, chrome plated, fixed brass swan-neck spout. Water only flows whilst the button is depressed.



Plan



End Elevation



**Floor Standing Drinking Fountain – Adult Height
 (AP-471-B and AP473-S)**



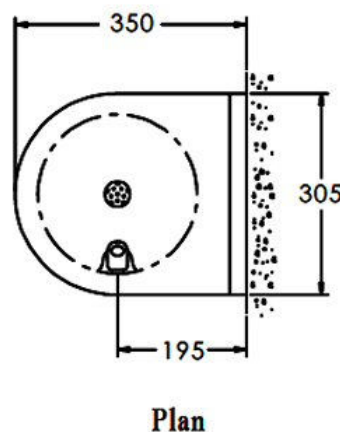
The adult height, floor standing drinking fountain is hygienic, robust and easily installed. The shielded bubbler valve is positioned for ease of use and the smooth radiused design eliminates sharp corners which can cause injury. This model comes with full height shroud which is held in position by security-type screws. The drinking fountain is manufactured in one piece without joints or crevices from grade 304 stainless steel. All exposed surfaces are polished to a satin finish. For ease of cleaning and hygiene, a splashback is incorporated in the top. Each drinking fountain is supplied with a 32mm flush grated waste fitting and a chrome plated shielded bubbler complete with a self closing push button valve. The valve incorporates a flow adjuster and strainer and is supplied with a water inlet fitting to suit 15mm diameter pipework.

Width: 305mm

Depth: 350mm (projection from wall)

Height: 990mm (including 75mm high rear upturn but excluding bubbler)

Dispenser type: standard bubbler valve can be changed to self-closing push button valve fitted with a 255mm high, chrome plated, fixed brass swan-neck spout. Water only flows whilst the button is depressed.



Pedestal Drinking Fountain (AP-481-B and AP-481-S)



The adult height, floor standing drinking fountain is hygienic, robust and easily installed. The shielded bubbler valve is positioned for ease of use and the smooth radiused design eliminates sharp corners which can cause injury. Supply and waste pipework can be installed within the pedestal that incorporates a removable access panel, held in position by security-type screws, and a floor fixing plate. The drinking fountain is manufactured in one piece without joints or crevices from grade 304 stainless steel. All exposed surfaces are polished to a satin finish. Each drinking fountain is supplied with a 32mm flush grated waste fitting and a chrome-plated shielded bubbler complete with a self closing push button valve. The valve incorporates a flow adjuster and strainer and is supplied with a water inlet fitting to suit 15mm diameter pipework.

Diameter: 280mm (projection from wall)

Height: 915mm (excluding bubbler)

Dispenser type: standard bubbler valve can be changed to self-closing push button valve fitted with a 255mm high, chrome plated, fixed brass swan-neck spout. Water only flows whilst the button is depressed.

