



INSTALLATION INSTRUCTIONS

GW-941

Wall Mounted Bottle Filler Installation Instructions

Includes:

- Wall mounted bottle filling station
- Pipework cover
- 2x CR123 batteries (for LCD bottle counter)
- 2.5mm Allan key
- Mounting screws & plugs for solid walls
- Waste fitting: JG 3/4" Female BSP x 3/8" Push fit CI321216FS

Optional (not included):

Mains Water Installation Kit
Code: MWCK1



See Page 5.

Waste Pipe Connection Kit
Code: WPCK2



1. Step-by-Step Installation



- Position the rear mounting bracket on the wall.
- Use a level to ensure the bracket is level.
- Mark the 9 fixing points on the wall.
- Drill holes at the marked points.
- Insert the wall plugs and secure the bracket to the wall with the screws.

2. Installing the Batteries



- Open the battery housing inside the Fountain cover.
- Insert 2 x CR123 Batteries to power the flow meter and bottle saving odometer.

3. Connecting the Water Feed Pipe



- Connect the water feed pipe to the flow meter located inside the top of the Fountain cover unit.

Please Note: If installing in a covered out door space please ensure all pipework and the filter (If fitted) is lagged to prevent freezing.

4. Mounting the Dispenser Body



- Carefully position the dispenser body onto the wall bracket.
- Secure the body with the 2 Allen key screws located at the bottom left and right sides of the Body.

5. Connecting the Water Feed Pipe

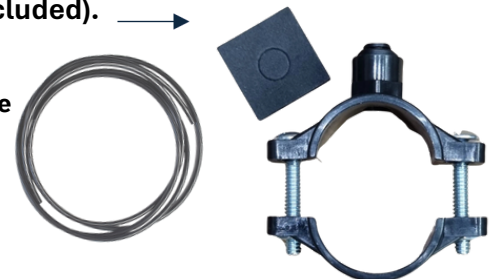


- Connect the 1/4" water feed pipe to the bulkhead fitting at the bottom of the dispenser.

6. Connecting the Drainage Pipe

- Connect a 3/4" BSP to 3/8" John Guest Fitting to the drainage outlet on the unit.
- Attach a 3/8" pipe to the fitting. **(Not included)**.
- Connect 3/8" drainage pipe to waste receptacle.
- Optional 3/8" Push Fit to 32mm clamp to waste pipe connection **(Not included)**.

WPCK2 – Optional Waste Pipe Connection Kit



7. Installing the Pipework Cover



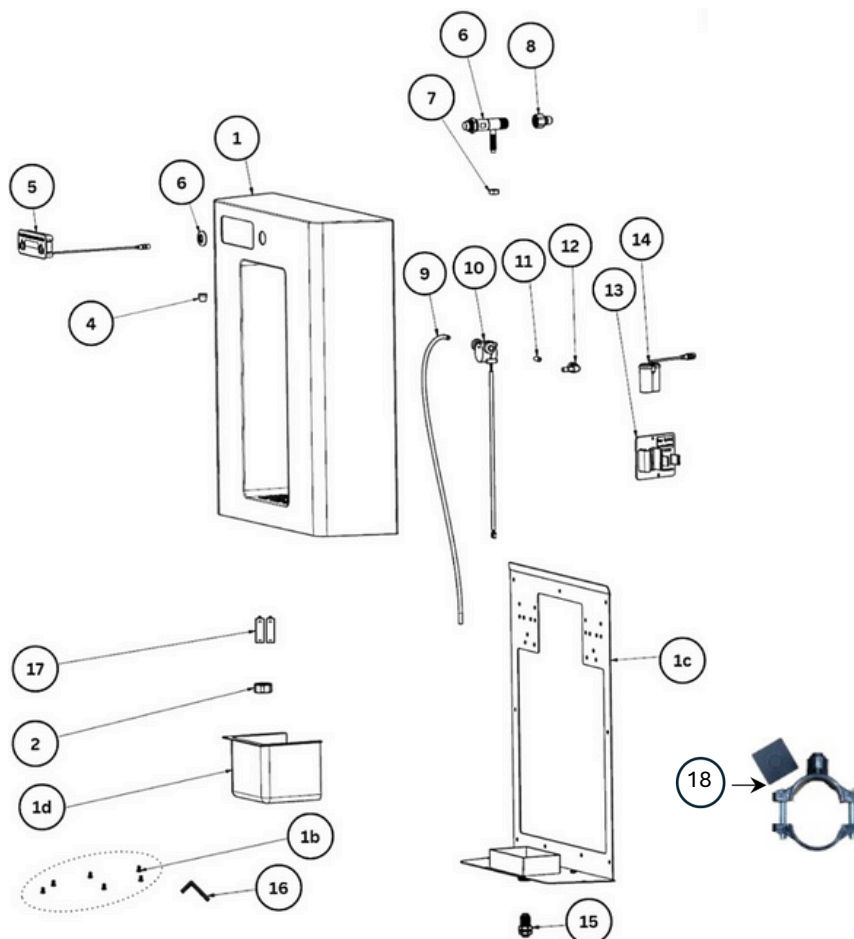
- Screw into place with the 4 x Allen key screws to the pipework cover at the bottom of the unit.
- This is to prevent tampering with the pipe connections.

8. Testing the Unit



- Once all the connections are secure, test the unit by dispensing water.
- The counter on the top should increase by 1 for every 500ML of water dispensed, indicating the number of plastic bottles saved.
- Test the drain connections and that the water flows smoothly.
- The waste pipe must have a fall and the receptacle must be lower than the connection to the unit.

| NO. | DESCRIPTION | CODE | NO. | DESCRIPTION | CODE |
|------|--|------------|-------|--|---------|
| 1 | Fountain Cover | FNT501 | 8 9 | Valve Connection | FNT508 |
| 1b | Allen key 2.5mm Screws x6 | FNT501B | | John Guest ¼" Tube (x45cm) | FNT509 |
| 1c | Wall Mounting Bracket with Drip Tray | FNT501C | 11 | John Guest ¼" Tube (x4cm) | FNT5011 |
| 1d | Pipework Cover | FNT501D | 12 | John Guest ¼" Elbow | FNT5012 |
| 2 | 3/4" BSP to 3/8" Push-fit Reducer | CI321216FS | 13,14 | Fixing Plate & Battery Box | FNT5013 |
| 4 | Outlet Cover | FNT504 | 15 | Drain Connector | FNT5015 |
| 5,10 | Bottle Savings Calculator & Flow Meter | FNT505 | 16 | Allen Key 2.5mm | FNT5016 |
| 6 | Instant Angle Valve | FNT506 | 17 | Batteries x2 | FNT5017 |
| 7 | Hex Nut | FNT507 | 18 | 3/8" Push Fit to 32mm clamp for waste connection (Optional) | FNT5018 |



MWCK1 – Optional Mains Water Connection Kit



Overview: The MWCK1 Water connection kit provides all necessary components to safely connect a mains water supply to the wall mounted bottle filler. It includes flow control, backflow prevention, and flood protection features. Designed for ease of installation with push-fit compatibility.

*** 15mm compression equal tee (brass)**
Creates a branch from the mains water pipe.

*** 15mm compression equal elbow (brass)**
Used when the mains pipe is vertical. Enables correct installation of the Water Block, which must not be installed horizontally.

*** Short length of 15mm copper pipe**
Connects fittings within the installation rail.

*** 15mm compression double check valve with isolation tap**
Provides backflow prevention and allows isolation for maintenance.

*** Pressure reducing valve (set to 2.5–3.0 bar)**
Controls pressure to protect downstream components.

*** Water Block**
Includes a non-return valve and flood protection.
****Must be installed vertically, pointing downward.****

*** ¾" BSP to ¼" push-fit reducer (John Guest type)**
Allows connection to 1/4" tubing.

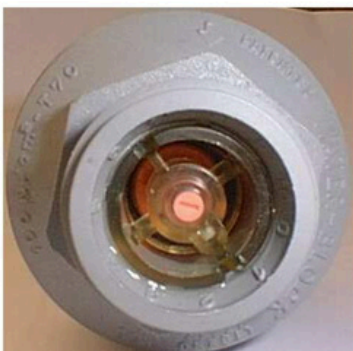
*** 3m of 1/4" blue push-fit connection tubing**
To be cut to the shortest practical length during installation.

(See below about the water block). MUST BE INSTALLED VERTICALLY POINTING DOWNWARDS

Installation Instructions:

1. Isolate the water supply using the stopcock or an isolation valve.
2. Cut the copper pipe, ensuring enough space is left to install a T-piece or elbow compression fitting. (Use pipe clips to support the pipework where necessary.)
3. Install the MWCK1, ensuring the Water Block is mounted vertically with the arrow pointing downward.
4. Carefully inspect all pipework for leaks before commissioning the system.

About the Water Block



The Water Block is designed to prevent large scale flooding by limiting the amount of water (dependent upon the setting) that passes through in one flow. The Water Block should be installed in a vertical position with the flow direction pointing down.

To set the flow meter on the Water Block use the white key provided to move the arrow to number 1 on the inside of the rim. This will limit the flow to 4.5 ltr. If the arrow points to 2, the flow will be limited to 9 ltr etc.

In the event that the water block shuts the water off the pink button in the centre of the block will pop out. Simply depress the button to reset