

URINAL TROUGH

STAINLESS STEEL - WALL HUNG

MODEL
SSU-RANGE

Gentworks



- Available in Five Lengths
- Sanitary Grade 304 1.2mm or 1.5mm Stainless Steel
- Supplied With Auto Cistern and Downpipe
- Enclosed Horizontal Flushing Sparge
- 1.5" BSP Waste Outlet (Choice of Location)
- Top Water Inlet (Optional Back Inlet)
- Integral Wall Fixing Brackets and Stainless Screws
- Made in the UK

Standard Lengths = 1200mm, 1500mm, 1800mm, 2100mm & 2400mm

Upgrade your high-traffic washrooms with this customisable 'SSU' stainless steel wall hung urinal.

Ideal for schools, offices, factories, sports facilities, and more. The satin polished non-reflective surface provides a modern and clean appearance. Crafted from durable 1.2mm or 1.5mm grade 304 austenitic stainless steel with fully capped ends and a concealed stainless steel flush box for maximum tamper-resistance and security. Optional back water inlet to suit ducted concealed installations, stainless steel exposed cistern, downpipe cover, and trap cover available for additional cost to increase vandal-resistance.

Pack Includes:

- Urinal trough
- 1.5" BSP waste
- Plastic cistern (upgradeable to stainless steel)
- Downpipe and sparge pipe
- Fittings & fixing screws

Sample specification Text

Gentworks Stainless Steel Wall Hung Urinal Trough **XXXX**(L) x 280mm (W) x 585mm (H), Material Thickness **1.2mm/1.5mm**
Supplied with Automatic Cistern and Downpipe, **Top/Rear** Water Inlet and 1.5" BSP with **Left/Right/Centre** waste outlet,
Product Code SSU-RANGE

***RED TEXT** may denote a variable

Gentworks

www.gentworks.co.uk | sales@gentworks.co.uk | Ph. +44(0)1844 353210

05/23

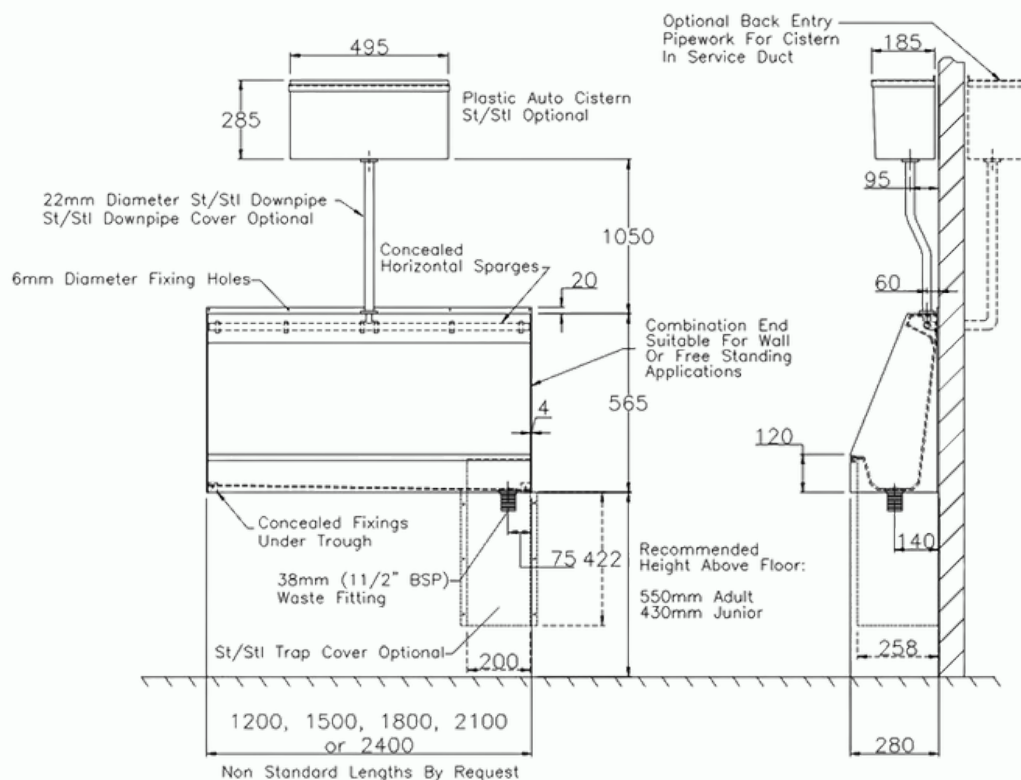
Due to ongoing product development details are subject to change without notice

URINAL TROUGH

STAINLESS STEEL - WALL HUNG

MODEL
SSU-RANGE

Gentworks



Optional Items



FLOW SAVER

Comply with water regulations, save water and reduce costs.



SSC-S

Stainless Steel Cistern Upgrade



SSTRAPCOV

Stainless Steel Trap Cover



SSDOWNCOV

Stainless Steel Down Pipe Cover

Gentworks

www.gentworks.co.uk | sales@gentworks.co.uk | Ph. +44(0)1844 353210

05/23

Due to ongoing product development details are subject to change without notice